

## Notice from your new electricity provider, Clean Power Alliance.

You can now enjoy the benefits of clean, renewable power at competitive rates.

## Aviso de su nuevo proveedor de electricidad, Clean Power Alliance.

Ahora puede disfrutar de las ventajas de la energía limpia y renovable a precios competitivos.

Access terms and conditions in other languages at [cleanpoweralliance.org](https://cleanpoweralliance.org).

### Terms and Conditions of Service

Clean Power Alliance electric generation rates are competitive. Available rates can be reviewed at [cleanpoweralliance.org](https://cleanpoweralliance.org) or by contacting Clean Power Alliance at 888-585-3788 (TTY 323-214-1296). Any changes to Clean Power Alliance rates will be adopted at duly noticed public meetings of the Clean Power Alliance Board of Directors.

Southern California Edison (SCE) collects from Clean Power Alliance customers authorized charges for delivering power to your home or business and for providing other services. These components of your electric bill are the same whether you buy electricity from Clean Power Alliance or SCE.

Southern California Edison also charges Clean Power Alliance customers a Power Charge Indifference Adjustment (PCIA) and a Franchise Fee Surcharge. Both are calculated based on the number of kilowatt hours used each month. The PCIA is intended to ensure that customers who switch to Clean Power Alliance pay for energy that was acquired by SCE to serve them prior to their switch. Note that Clean Power Alliance rates are competitive with SCE's rates, even with these fees.

**Billing:** Each month, Clean Power Alliance customers receive a single monthly bill from SCE, just as they would under SCE bundled service. This bill includes all electric charges, including Clean Power Alliance's power generation charges. SCE will continue to charge you for transmission and distribution services they provide; this includes the cost of transmitting electricity to your home or business.

**Enrollment:** You were automatically enrolled in Clean Power Alliance, unless you opted out, on your scheduled meter read date on or following February 1, 2019.

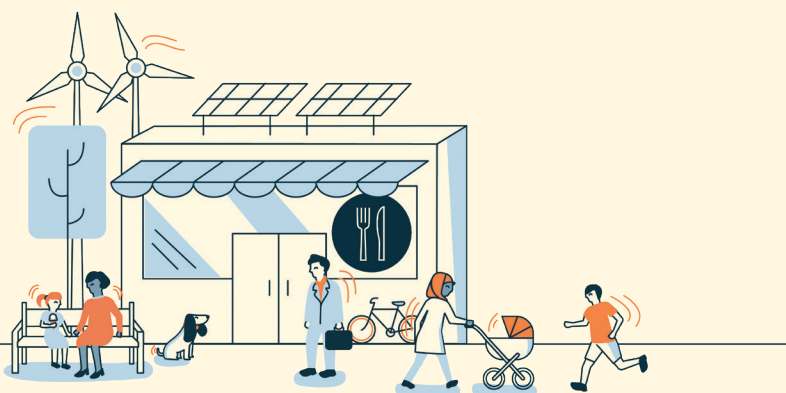
**Discount Programs:** If you are currently enrolled in the California Alternative Rates for Energy (CARE) program, the Family Electric Rate Assistance (FERA) program, Medical Baseline, Level Pay or Summer Discount Program, you will continue to receive all benefits and discounts as a Clean Power Alliance customer.

**Opt out:** You have the right to opt out without penalty at any time. You will not be charged any fees by Clean Power Alliance if you opt out or if you cancel electric service altogether (for example, if you move). However, customers who opt out of Clean Power Alliance after service launch may be charged a one-time account processing fee by SCE (currently 50 cents\*), and will be prevented

by SCE from returning to Clean Power Alliance for a minimum of twelve months. By opting out, you will also be subject to SCE's then current rates and terms and conditions of service. For details on SCE's rates and terms and conditions, please visit [sce.com/tnc](https://sce.com/tnc). If you opt out, you will still be charged for all electricity you used before the transfer of electric service. Accounts will be transferred when the electric meter is read and cannot be transferred during the middle of a billing cycle. In order for your request to be processed on your next meter read date, your request must be received at least 5 business days prior to the date on which the meter is read. To opt out, please call Clean Power Alliance at 888-585-3788 (TTY 323-214-1296) or visit [cleanpoweralliance.org](https://cleanpoweralliance.org). Please have your electric bill handy so you have the information needed to process the request.

**Failure to pay:** Clean Power Alliance may transfer your account to SCE upon 14 calendar days' written notice to you if you fail to pay any portion of the Clean Power Alliance charges on your bill. If your service is transferred, you may be subject to additional requirements by SCE.

\*SCE's one-time account processing fee is subject to change. View SCE's fees at [www.sce.com/regulatory/tariff-books](https://www.sce.com/regulatory/tariff-books).



To learn more, change your rate, or opt out, visit [cleanpoweralliance.org](https://cleanpoweralliance.org) or call us at 888-585-3788 (TTY 323-214-1296).

추가 질문? 우리가 도와주고 있습니다. 전화 888-585-3788 (TTY 323-214-1296)로 전화하십시오.  
更多問題? 我們來幫忙。請致電888-585-3788 (TTY 323-214-1296)。  
Имеются к нам вопросы? Мы к Вашим услугам. Звоните нам по тел. 888-585-3788 (TTY 323-214-1296).  
هل لديك أسئلة أخرى؟ نحن هنا للمساعدة. اتصل بنا على 888-585-3788. (رقم الهاتف النصي 323-214-1296).  
آیا سوالات بیشتری دارید؟ ما برای کمک به شما اینجا هستیم. 888-585-3788. (با ما تماس بگیرید 323-214-1296).

## How does it work?

Clean Power Alliance purchases renewable and carbon-free power for you and Southern California Edison (SCE) delivers it.

**As of February 2019, you are officially a Clean Power Alliance customer.** Your city or county is leading the way to a healthier future and chose **100% Green Power** as your default rate.

You can change your rate or return to SCE at anytime (if you haven't already), by visiting [cleanpoweralliance.org/rates](http://cleanpoweralliance.org/rates) or calling us at 888-585-3788.

## What will it cost?

**100% Green Power will cost 7-9% more than SCE's default rate** and currently costs about 5% less than SCE's 100% renewable rate.

The few extra dollars a month is an easy way to join your community in reducing pollution and creating jobs by funding the development of new clean energy options.

**Customers enrolled in CARE, FERA or Medical Baseline on our 100% Green Power rate will NOT pay this premium. Instead, they will be charged the same rates as they would pay to SCE** because Clean Power Alliance believes in making clean energy accessible and affordable. If you're not already enrolled in these programs, you can check your eligibility and apply through SCE by calling them at 800-798-5723 or visiting their website at [sce.com/care](http://sce.com/care).

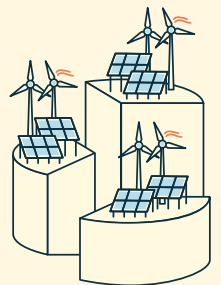
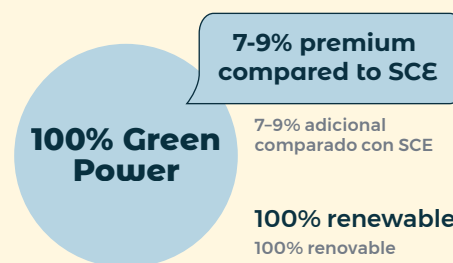
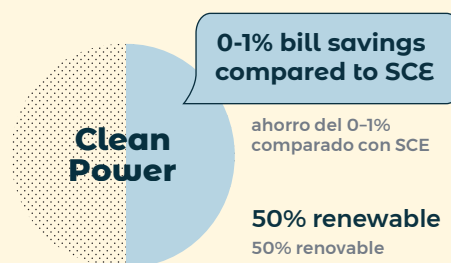
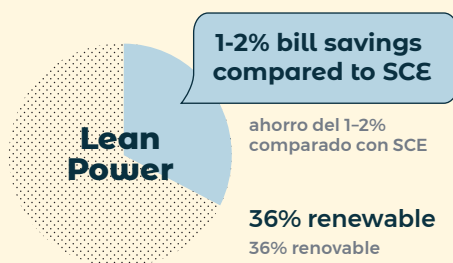
## Will these rates change?

SCE has proposed a double digit increase to 2019 rates and fees charged to both their own and Clean Power Alliance customers to make up for their 2018 revenue shortfall of over \$800 million dollars.

If SCE's proposed increases are approved by the California Public Utilities Commission, **Clean Power Alliance will adjust rates at future public board meetings as needed to ensure the 7-9% premium for 100% Green Power does NOT change and all our rates remain competitive compared to SCE rates.**

Visit [cleanpoweralliance.org/compare](http://cleanpoweralliance.org/compare) to compare your Clean Power Alliance and SCE rate options.

**Want a different rate? No problem! You can change your rate at any time and at no cost by selecting one of Clean Power Alliance's other two rate options: Lean Power or Clean Power.** No matter the rate option, Clean Power Alliance offers the shared benefits of local management and control, stable, competitive rates, and higher renewable content.



## ¿Cómo funciona?

Clean Power Alliance compra energía renovable y libre de carbono, y Southern California Edison (SCE) la transmite.

**A partir de febrero de 2019 usted es oficialmente cliente de Clean Power Alliance.** Su ciudad o condado está liderando el camino a un futuro más saludable y escogió **100% Green Power** (Energía 100% Verde) como su tarifa predeterminada. Puede cambiar su tarifa o regresar a SCE en cualquier momento (si todavía no lo ha hecho) visitando [cleanpoweralliance.org/rates](http://cleanpoweralliance.org/rates) o llamando a 888-585-3788.

## ¿Cuánto costará?

**100% Green Power costará 7-9% más que la tarifa predeterminada de SCE** y actualmente cuesta alrededor de 5% menos que la tarifa 100% renovable de SCE. Los pocos dólares adicionales al mes son una manera fácil de unirse a su comunidad para reducir la contaminación y crear empleos al financiar el desarrollo de nuevas opciones de energía limpia. Para comparar sus opciones de tarifa con Clean Power Alliance y con SCE, visite [cleanpoweralliance.org/compare](http://cleanpoweralliance.org/compare).

## ¿Cambiarán estas tarifas?

SCE ha propuesto un aumento de dos dígitos en sus tarifas y cargos de 2019 que cobraría tanto a sus clientes como a los de Clean Power Alliance para compensar su déficit presupuestario de más de 800 millones de dólares en el 2018. Si la Comisión de Servicios Públicos de California (California Public Utilities Commission) aprueba los aumentos propuestos por SCE, **Clean Power Alliance ajustará sus tarifas en reuniones futuras del consejo cuando sea necesario para garantizar que el costo adicional de 7-9% por 100% Green Power NO cambie y que todas nuestras tarifas sigan siendo competitivas comparadas con las tarifas de SCE.**

**Los clientes con nuestra tarifa 100% Green Power inscritos en CARE, FERA o Medical Baseline NO pagarán este costo adicional. En lugar de eso, se les cobrará las mismas tarifas que pagarían a SCE** porque Clean Power Alliance cree en hacer que la energía limpia sea accesible y asequible. Si usted actualmente no está inscrito en esos programas puede ver si reúne los requisitos y solicitarlos por medio de SCE llamando al 800-798-5723 o visitando su sitio web en [sce.com/care](http://sce.com/care).

**¿Quiere una tarifa diferente? ¡No hay problema! Puede cambiar su tarifa en cualquier momento sin costo alguno seleccionando una de las otras dos opciones de tarifas de Clean Power Alliance: Lean Power (Energía Lean) o Clean Power (Energía Limpia).** No importa cuál sea la opción de tarifas, Clean Power Alliance ofrece los beneficios compartidos de la administración y el control local, tarifas estables y competitivas, y mayor contenido de energía renovable.