

## Welcome!

You will soon enjoy the advantages of clean, renewable power at competitive rates! Clean Power Alliance is your new electricity supply provider.

## 환영합니다!

이제 곧 청정한 재생가능전력을 저렴한 요금으로 이용하실 수 있습니다! 저희 클린 파워 얼라이언스에서 새롭게 전력을 공급해 드리겠습니다.

## 歡迎!

不久後，您將以具有競爭力的價格享受清潔的可再生電力所帶來的種種好處！清潔電力聯盟是您的新電力供應商。

## ¡Bienvenido!

¡Pronto disfrutará las ventajas de energía limpia y renovable con tarifas competitivas! Clean Power Alliance es su nuevo proveedor de electricidad.

**More questions? We're here to help. Call us at 888-585-3788 (TTY 323-214-1296).**

Имеются к нам вопросы? Мы к Вашим услугам. Звоните нам по тел. 888-585-3788 (TTY 323-214-1296).

هل لديك أسئلة أخرى؟ نحن هنا للمساعدة. اتصل بنا على 888-585-3788. (رقم الهاتف النصي 323-214-1296)

آیا سوالات بیشتری دارید؟ ما برای کمک به شما اینجا هستیم. 888-585-3788. (با ما تماس بگیرید 323-214-1296)

**Who are we?** Clean Power Alliance believes in a clean energy future that is local, where communities are empowered and customers are given a choice about the source of their energy. We are California's new locally operated electricity provider made up of 31 public agencies across Los Angeles and Ventura counties, offering clean renewable energy at competitive rates.

**¿Quiénes somos?** Clean Power Alliance cree en un futuro con energía limpia que es local, en el que las comunidades estén empoderadas y los clientes puedan elegir la fuente de su energía. Somos el nuevo proveedor de electricidad de California. Nuestra administración es local, estamos constituidos por 31 agencias públicas en los condados de Los Angeles y Ventura, y ofrecemos energía limpia y renovable con tarifas competitivas.

**클린 파워 얼라이언스 소개** 클린 파워 얼라이언스는 우리 지역에서 전력을 생산해 지역사회에 보탬이 되고 고객 스스로 청정 에너지를 선택할 수 있는 밝은 세상을 만들어 갑니다. 로스앤젤레스 및 벤추라 카운티 전역에서 31개 공공기관이 힘을 합쳐 새로 운영하게 된 전력 공급업체로, 청정한 재생가능 에너지를 저렴한 가격에 공급해 드립니다.

**機構簡介**清潔電力聯盟認為，清潔能源的未來應以本地為根基，賦予本地社區充分的權利，並給予用戶對於其能源來源的選擇權。我們是加州新的本地營運電力供應商，由來自洛杉磯和范杜拉縣31個公營機構組成，以具有競爭力的價格提供清潔的可再生能源。

**Need financial assistance?** The California Alternate Rates for Energy (CARE) Program reduces energy bills for eligible customers by about 30% and the Family Electric Rate Assistance (FERA) Program reduces energy bills by about 12%. Qualifications are based on participation in public assistance programs, or on household income. If someone in your household needs powered medical equipment, the Medical Baseline Program provides additional energy to your normal baseline allocation, saving you money. If you don't currently receive CARE, FERA, or Medical Baseline assistance, you can quickly and easily apply through SCE by calling them at 800-798-5723 or visiting their website at [sce.com](http://sce.com).

### ¿Necesita asistencia económica?

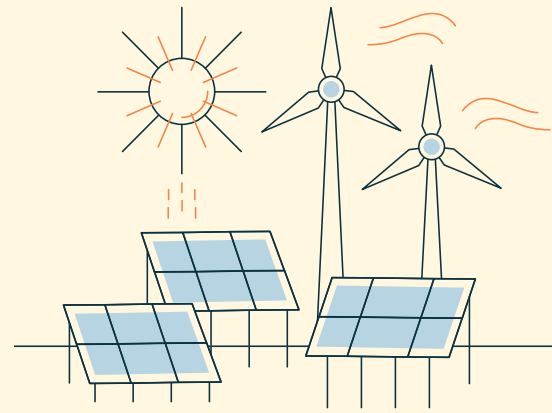
El Programa California Alternative Rates for Energy (CARE) reduce en aproximadamente un 30% las facturas de energía para los clientes que reúnen los requisitos y el Programa Family Electric Rate Assistance (FERA) reduce las facturas de energía en aproximadamente un 12%. La aceptación en los programas se basa en la participación en programas de asistencia pública, o en el ingreso del hogar. Si alguien en su hogar necesita equipo médico que funciona con energía eléctrica, el Programa Medical Baseline ofrece energía adicional a su asignación normal básica y de ese modo le ahorra dinero. Si usted actualmente no recibe asistencia de CARE, FERA o Medical Baseline, puede solicitarla rápida y fácilmente por medio de SCE llamando al 800-798-5723 o visitando su sitio web en [sce.com](http://sce.com).

### 재정 보조가 필요하신가요?

캘리포니아 에너지 대체요금 (CARE) 프로그램의 경우 소정 요건에 부합하는 고객님의 에너지 요금을 약 30%, 가족 전기 요금 지원 (FERA) 프로그램의 경우 약 12% 할인해 드립니다. 소정 요건은 재정 보조 프로그램 참여 여부나 가구소득 기준에 따라 정합니다. 함께 거주하는 가족이 전동 의료기기를 사용해야 하는 경우, 의료 기본공제 프로그램 (Medical Baseline Program)을 통해 정상 기본공제 이외에도 전기를 추가로 제공해 비용을 절감해 드립니다. 현재 CARE, FERA, 또는 의료 기본공제 보조를 받고 있지 않으시다면 전화 800-798-5723 또는 웹사이트 [sce.com](http://sce.com)으로 SCE에 연락해 쉽고 빠르게 신청하실 수 있습니다.

### 需要補助嗎?

加州低收入專享費率 (CARE) 計畫能讓符合條件的用戶減少大約30%的電費，聯邦電費補助 (FERA) 計劃則能減少大約12%的電費。用戶是否符合條件依其參加公共援助計畫的情況或根據家庭收入狀況而定。如果您家中有人需要電力醫療設備，醫療基線 (Medical Baseline) 計畫能在您平常的基本電量分配外提供額外電量，為您節省費用。如果您目前不享有 CARE、FERA 或 Medical Baseline 計畫補助，您可以致電 800-798-5723 或造訪 [sce.com](http://sce.com) 網站，透過 SCE 輕鬆快速申請參加這些計畫。



### Terms and Conditions of Service

Clean Power Alliance electric generation rates are competitive. Available rates can be reviewed at [cleanpoweralliance.org](http://cleanpoweralliance.org) or by contacting Clean Power Alliance at 888-585-3788. Any changes to Clean Power Alliance rates will be adopted at duly noticed public meetings of the Clean Power Alliance Board of Directors.

Southern California Edison (SCE) collects from Clean Power Alliance customers authorized charges for delivering power to your home or business and for providing other services. These components of your electric bill are the same whether you buy electricity from Clean Power Alliance or SCE.

SCE also charges Clean Power Alliance customers a Power Charge Indifference Adjustment (PCIA) and a Franchise Fee Surcharge. Both are calculated based on the number of kilowatt hours used each month. The PCIA is intended to ensure that customers who switch to Clean Power Alliance pay for energy that was acquired by SCE to serve them prior to their switch. Note that Clean Power Alliance rates are competitive with SCE's rates, even with these fees.

**Billing:** Each month, Clean Power Alliance customers receive a single monthly bill from SCE, just as they would under SCE bundled service. This bill includes all of the recent electric charges, including Clean Power Alliance's power generation charges. SCE will continue to charge you for Transmission and Distribution services they provide; this includes the cost of transmitting electricity directly to your home or business.

**Enrollment:** Starting February 2019, Clean Power Alliance will become the default electric power provider for your area. You will be automatically enrolled in Clean Power Alliance on your next scheduled meter read date on or following February 1, 2019.

**Discount Programs:** If you are currently enrolled in the California Alternative Rates for Energy (CARE) program, the Family Electric Rate Assistance (FERA) program, Medical Baseline, Level Pay or Summer Discount Program, you will continue to receive all benefits and discounts upon enrollment in Clean Power Alliance.

**Opt out:** You have the right to opt out without penalty any time. You will not be charged any fees by Clean Power Alliance if you opt out or if you cancel electric service altogether (for example, if you move). However, customers who opt out of Clean Power Alliance after service launch may be charged a one-time account processing fee by SCE, and will be prevented by SCE from returning to Clean Power Alliance for a minimum of twelve months. By opting out, you will also be subject to SCE's then current rates and terms and conditions of service. For details on SCE's rates and terms and conditions, please visit [sce.com](http://sce.com). If you opt out, you will still be charged for all electricity you used before the transfer of electric service. Accounts will be transferred on the day the electric meter is read and cannot be transferred during the middle of a billing cycle. In order for your request to be processed on your next meter read date, your request must be received at least 5 business days prior to the date on which the meter is read. To opt out, please call Clean Power Alliance at 888-585-3788 or visit [cleanpoweralliance.org](http://cleanpoweralliance.org). Please have your electric bill handy so you have the information needed to process the request.

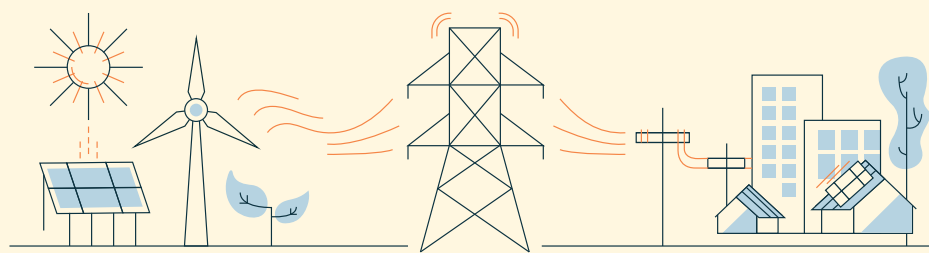
**Failure to pay:** Clean Power Alliance may transfer your account to SCE upon 14 calendar days' written notice to you if you fail to pay any portion of the Clean Power Alliance charges on your bill. If your service is transferred, you may be subject to additional requirements by SCE.

Access terms and conditions in other languages at [cleanpoweralliance.org](http://cleanpoweralliance.org).

# How does it work?

Clean Power Alliance purchases clean power and Southern California Edison (SCE) delivers it. **Nothing else changes**—SCE will continue to deliver power to your home, send just one bill, be responsible for resolving any issues with your electricity service, and qualified customers will continue to have access to financial assistance, rebates, and incentives.

Starting February 1, 2019, you will be automatically enrolled in **Clean Power** which provides 50% renewable energy content and the opportunity to support building a cleaner future.



## ¿Cómo funciona?

Clean Power Alliance compra energía limpia y SCE la entrega. **Nada más cambia**—SCE seguirá transmitiendo energía a su hogar, enviando una sola factura, seguirá siendo responsable de resolver cualquier problema con su servicio eléctrico, y los clientes que reúnen los requisitos seguirán teniendo acceso a asistencia e incentivos económicos y reembolsos.

A partir del 1.º de febrero de 2019, usted será inscrito automáticamente en **Clean Power** que ofrece energía con un contenido renovable de 50% y la oportunidad de ayudar a crear un futuro más limpio.

## 어떤 방식으로 운영되나요?

클린 파워 얼라이언스에서 청정전력을 구매하고 이를 SCE에서 고객 여러분께 전달하는 방식입니다. **그 외에 달라지는 점은 없습니다** - 종전대로 SCE에서 각 가정에 배전, 고지서 발송, 전기 서비스 관련 문제 해결을 담당하게 되며, 소정 요건에 부합하는 고객은 재정 보조, 리베이트, 인센티브를 계속해서 이용하실 수 있습니다.

재생가능 에너지 비율 50%로 청정한 미래를 구축하는 데 기여하게 될 **클린 파워(Clean Power)**에 2019년 2월 1일부로 자동 등록됩니다.

## 它是如何運作的?

清潔電力聯盟購買清潔電力後由SCE負責輸送。 **其他一切都沒有改變**—SCE繼續輸送電力到您的住家，寄送一張電費帳單，負責解決與電力服務有關的任何問題，同時符合條件的用戶也會繼續享有補助、退款和獎勵。

從2019年2月1日開始，您將自動被登記參加 **Clean Power** 方案，該方案提供含量佔50%的可再生能源，並給予用戶支持建造一個更清潔未來的機會。

# The choice is yours!

You can change your service at any time by selecting one of Clean Power Alliance's other two rate options: Lean Power, which provides 36% renewable energy content at the lowest possible cost, and 100% Green Power, which provides 100% renewable energy content and gives customers the opportunity to be an environmental champion. To learn more or to change your rate, visit [cleanpoweralliance.org](http://cleanpoweralliance.org) or **contact us at 888-585-3788 (TTY 323-214-1296)**.

## ¡Usted elije!

Puede cambiarsu servicio en cualquier momento seleccionando una de las otras dos opciones de tarifas de Clean Power Alliance: Lean Power, que ofrece energía con un contenido renovable de 36% al menor costo posible y 100% Green Power que ofrece energía con un contenido renovable de 100% y ofrece a sus clientes la oportunidad de ser un campeón ambiental. Para informarse más o para cambiar su tarifa visite [cleanpoweralliance.org](http://cleanpoweralliance.org) o **contáctenos al 888-585-3788 (TTY Teletipo 323-214-1296)**.

## 자유롭게 선택하세요!

클린 파워 얼라이언스에서 제공하는 두 종류의 기타 요금제, 즉 재생가능 에너지 비율이 50%인 클린 파워 (Clean Power)와 동 비율이 100%로 친환경 운동에 앞장설 수 있는 그린 파워(Green Power) 중에서 선택하실 수 있습니다. 자세한 정보가 필요하거나 요금제를 변경하려면 [cleanpoweralliance.org](http://cleanpoweralliance.org)를 방문하거나 **888-585-3788로 전화주시기 바랍니다. (TTY 청각장애인용 전화 323-214-1296)**.

## 選擇權在您!

您可以在任何時候，選用清潔電力聯盟另外兩種費率方案的其中一種，來變更您的服務：Lean Power方案，以盡可能最低的價格提供含量佔36%的可再生能源；100% Green Power方案，提供含量100%的可再生能源並讓用戶有機會成為環保鬥士。如要了解詳情或要更改您的電力方案，請造訪[cleanpoweralliance.org](http://cleanpoweralliance.org)網站或致電 **888-585-3788與我們聯絡(TTY 電傳打字機裝置 323-214-1296)**。

